

## Appendix A: SMP Development

<b>A1</b>	<b>Introduction .....</b>	<b>3</b>
<b>A2</b>	<b>Project Information .....</b>	<b>4</b>
<b>A3</b>	<b>SMP Programme .....</b>	<b>6</b>
<b>A4</b>	<b>Stage 1: SMP Scope .....</b>	<b>8</b>
<b>A5</b>	<b>Stage 2: Assessments to Support Policy Development.....</b>	<b>12</b>
<b>A6</b>	<b>Stage 3: Policy Development.....</b>	<b>16</b>
<b>A7</b>	<b>Stage 4: Public Examination.....</b>	<b>20</b>
<b>A8</b>	<b>Stage 5: Finalise Plan.....</b>	<b>21</b>

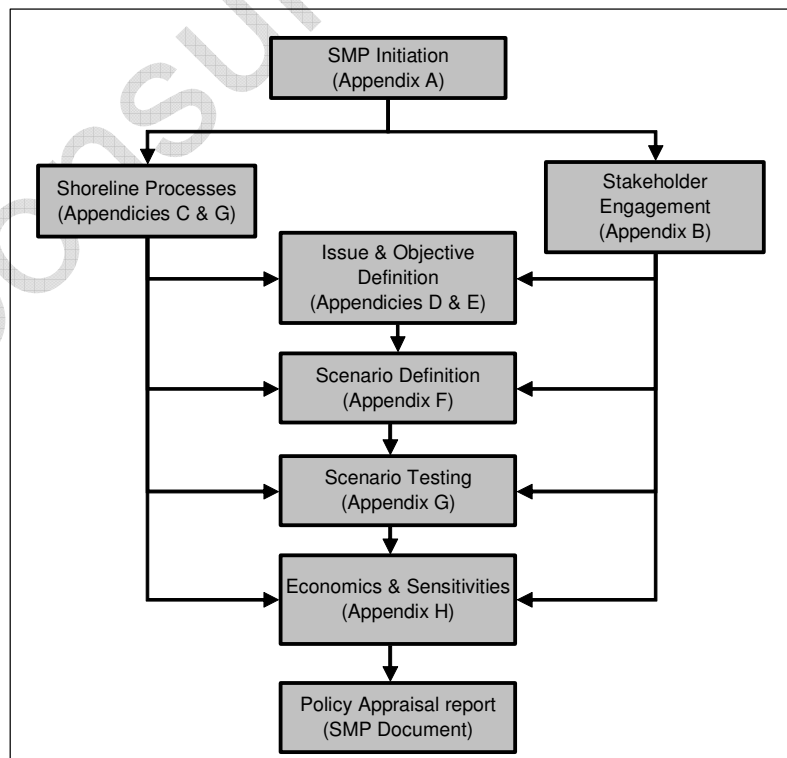
Consultation Draft

### The Supporting Appendices

This appendix and the accompanying documents provide all of the information required to support the Shoreline Management Plan. This is to ensure that there is clarity in the decision-making process and that the rationale behind the policies being promoted is both transparent and auditable. The appendices are:

A: SMP Development	This reports the history of development of the SMP, describing more fully the plan and policy decision-making process.
B: Stakeholder Engagement	All communications from the stakeholder process are provided here, together with information arising from the consultation process.
C: Baseline Process Understanding	Includes baseline process report, defence assessment, NAI and WPM assessments and summarises data used in assessments.
D: Thematic Review	This report identifies and evaluates the environmental features (human, natural, historical and landscape).
E: Issues & Objective Evaluation	Provides information on the issues and objectives identified as part of the Plan development, including appraisal of their importance.
F: Initial Policy Appraisal & Scenario Development	Presents the consideration of generic policy options for each frontage, identifying possible acceptable policies, and their combination into 'scenarios' for testing.
G: Scenario Testing	Presents the policy assessment and appraisal of objective achievement towards definition of the Preferred Plan (as presented in the Shoreline Management Plan document).
H: Economic Appraisal and Sensitivity Testing	Presents the economic analysis undertaken in support of the Preferred Plan.
I: Metadatabase and Bibliographic database	All supporting information used to develop the SMP is referenced for future examination and retrieval.

Within each appendix cross-referencing highlights the documents where related appraisals are presented. The broad relationships between the appendices are as below.



# A1 Introduction

This Appendix provides a full explanation of Shoreline Management Plan (SMP) process adopted and description of the policy decision-making process and outlines the chronology of the SMP development.<sup>1</sup>

## A1.1 WHAT IS THE SHORELINE MANAGEMENT PLAN?

A Shoreline Management Plan (SMP) provides a large-scale assessment of the risks associated with coastal evolution and presents a policy framework to address these risks to people and the developed, historic and natural environment in a sustainable manner.

The SMP is a non-statutory, policy document for coastal defence management planning. It takes account of other existing planning initiatives and legislative requirements, and is intended to inform wider strategic planning. It does not set policy for anything other than coastal defence management. As such, it does not set policies for the management of issues such as land drainage.

## A1.2 BACKGROUND TO THE SOUTH FORELAND TO BEACHY HEAD SMP

In 1994, a team of consultants were appointed to prepare the original Shoreline Management Plan for the coastline from South Foreland to Beachy Head. Based upon the guidance at that time, policies were defined for a 50-year period.

The SMP was completed in 1996, and numerous coastal defence strategies and schemes have subsequently been developed based on the policies recommended. Some of these initiatives are ongoing in implementing the existing SMP policies, and should not be confused with this SMP. Where outstanding studies may affect the reviewed policy decision this is noted in the SMP recommendation presented overleaf.

## A1.3 THE SMP REVIEW

Recognising the need for review of the existing SMP policies, the South East Coastal Group commissioned consulting engineers Halcrow Group Ltd to revise the SMP for South Foreland to Beachy Head. The review was commissioned to take account of:

- latest coastal studies;
- issues identified by most recent defence planning (i.e. coastal defence strategies which have now been produced to cover most of the SMP area);
- changes in legislation (e.g. European Union Habitats Directive);
- changes in national flood and coastal defence planning requirements (e.g. the need to consider a 100 year timeframe rather than the original 50 years).

---

<sup>1</sup> Refer to Section 1 of the SMP Document

## A2 Project Information

### A2.1 SMP BACKGROUND

This SMP is an update of the South Foreland to Beachy Head SMP originally produced by BMT<sup>2</sup> and ABP<sup>3</sup> in 1996. The review has been developed and produced in accordance with the latest Procedural Guidance (PG) for the production of SMPs (Defra, in draft) and is one of the first second generation SMPs to be produced, forming part of the testing of the PG. The draft SMP was developed over the period April 2003 to December 2004.

### A2.2 CLIENT STEERING GROUP (CSG)

The coastline covered by this Plan comes within the boundaries of six local authorities. They and the Environment Agency have certain permissive powers for defending the coast. The local authorities for the most part deal with defences which protect the coast from erosion by the sea, and the Environment Agency deal with flood risk management. Together they are required to produce an SMP for sustainable coastal defence management. This is achieved through the auspices of a Coastal Group made up of the six local authorities, the Environment Agency and other key bodies, as identified on the front of this leaflet. Other members of the group are; English Nature, who provide guidance on nature conservation; Kent and East Sussex County Councils, with coastal management interests; and Defra, who have overall policy responsibility for flood and coastal erosion risk in England including producing guidance and grant aid funding for SMP development. Officers from these organisations have managed the development of the SMP by Halcrow Group Ltd

The SMP was procured by the South East Coastal Group and at the start of the process a Client Steering Group was defined and comprised the following core members:

Name	Representing
Mr Simon Herrington (Chairman)	Shepway District Council (Lead Authority)
Mr Peter Padget	Eastbourne Borough Council
Mr Tony Stevens	Rother District Council
Mr Roger Walton	Dover District Council
Ms Phillipa Harrison	Environment Agency
Mr Robert Cameron	English Nature
Mr Bill Symons	Defra
Ms Abigail Raymond/ Ms Elizabeth Holliday/ Ms Liz Shier	Kent County Council
Mr Les Hawes	Hastings Borough Council

Additional attendees included:

<sup>2</sup> BMT: British Marine Technology

<sup>3</sup> ABP: Associated British Ports

Name	Representing
Ms Lydia Terrier	Shepway District Council
Ted Edwards	Canterbury City Council (Observer)

This group therefore included a representative from each of the district authorities, responsible for the a specific stretch of coast covered by the South Foreland to Beachy Head SMP, as well as Defra, English Nature and Environment Agency (Area) representatives.

It was agreed that Shepway District Council would be the Lead Authority on behalf of the South East Coastal Group and as such were responsible for the financial management of the project, including grant aid submission<sup>4</sup> and overall project administration. The CSG had overall responsibility for the delivery of the SMP and were involved throughout the life cycle of the SMP. As well as initiating the development process and defining the scope and extent of the SMP, they were responsible for managing the development of the SMP through guidance and review of work undertaken. The group will also oversee implementation of the SMP.

### A2.3 CONSULTANT

Halcrow Group Ltd was commissioned to produce the SMP by Shepway District Council. Some of the initial stakeholder engagement process and objective setting tasks were sub-contracted, with agreement from the CSG, to Terry Oakes Associates.

Key team members included:

Mr Andrew Scarth	Project Director
Mr Adam Hosking	Project Manager
Ms Andrea Richmond	Deputy Project Manager / Coastal Scientist /
Mr Robert Harvey	Principal Environmental Scientist
Ms Elise Pobjoy	Coastal Engineer
Dr Richard Westaway	GIS Analyst
Mr Terry Oakes (Terry Oakes Associates)	Stakeholder consultant

<sup>4</sup> Defra has policy responsibility for management of flood and coastal erosion risk in England but does not physically build or maintain defences. However, under the Coast Protection Act 1949, Land Drainage Act 1991 and Environment Act 1995 Defra does provide grant to the flood and coastal defence operating authorities to assist them with the cost of capital flood and coastal defence projects - the building of new or improved defences, feasibility and design studies into possible works and some high-level investigation studies into coastal processes and for shoreline management plans.

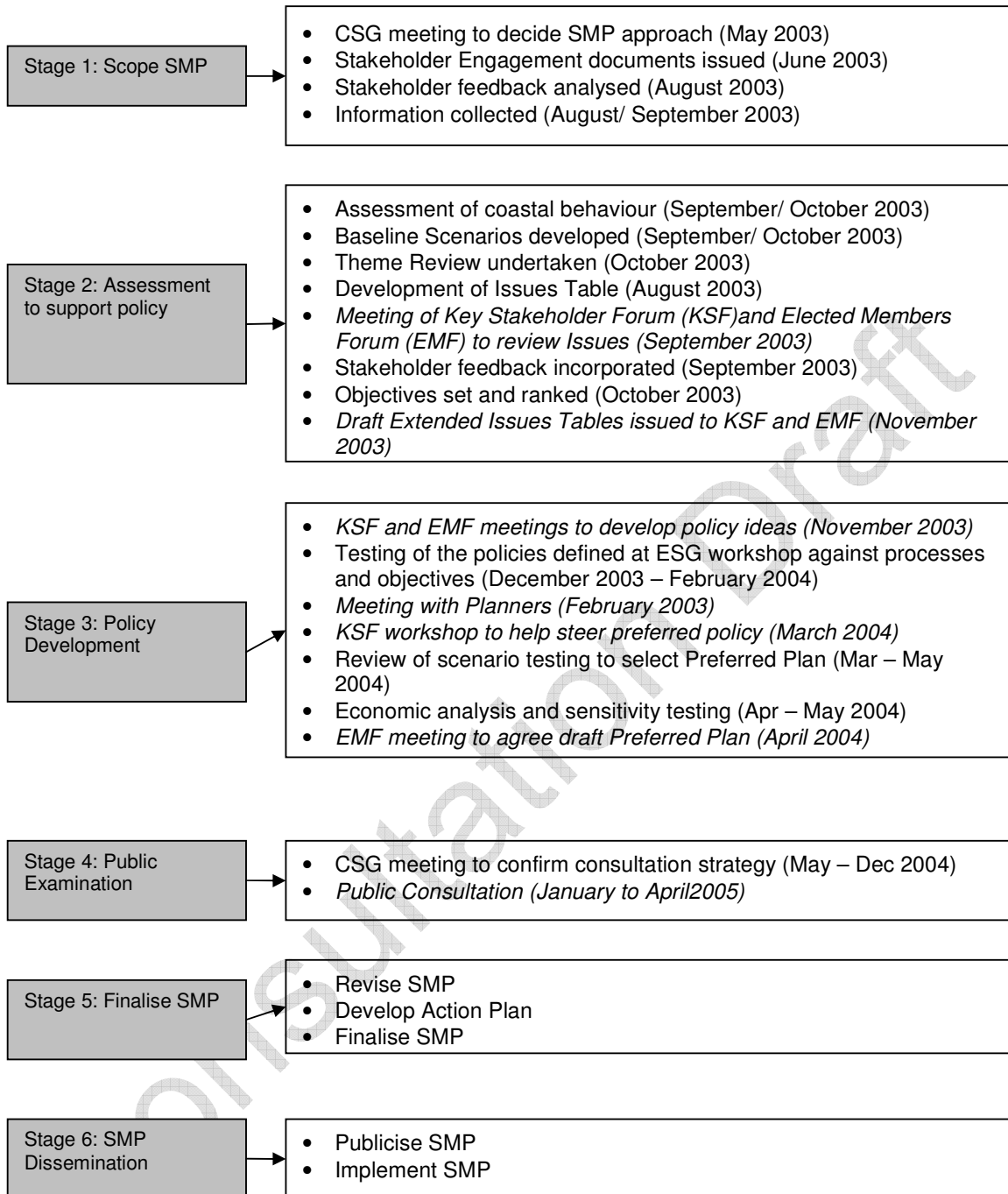
## A3 SMP Programme

The Figure below illustrates the timetable of activities carried out as part of SMP development. Highlighted in *italics* are the activities that have involved stakeholder engagement<sup>5</sup>. Stages 5 and 6 will be completed following Public Examination<sup>6</sup>.

---

<sup>5</sup> Refer to [Appendix B](#) for further details.

<sup>6</sup> The programme experienced a delay between Stages 3 and 4 as it was essential that there was consistency between the three pilots and hence revisions of the draft documentation.



## A4 Stage 1: SMP Scope

### A4.1 SMP BOUNDARIES

This SMP relates to *Sub-cell 4c*<sup>7</sup> and was the first SMP to be undertaken in England and Wales and covers the area from South Foreland, in the east, to Beachy Head, in the west: during the SMP Review no change, to these boundaries, was made.

### A4.2 STAKEHOLDER ENGAGEMENT STRATEGY

Four groups were involved in the SMP process:

- the Client Steering Group (CSG) – to provide technical expertise
- an Elected Member Forum (EMF) – to represent the public
- Key Stakeholder Forum (KSF) – to represent groups with a local, regional and national interest and
- additional stakeholders – to represent site specific interests.

#### (a) Elected Member Forum (EMF)

A representative, elected from each of the local and district authorities and each of the Area Environment Agency offices (Kent and East Sussex), were chosen on their technical experience and local knowledge<sup>8</sup>.

For the elected members, the following approach was adopted:

- Each of the proposed members were approached and invited to be a representative of the SMP and attend the first Elected Members Forum covered above<sup>7</sup>.
- At the first Elected Members Forum held on 11/09/2003) the SMP process was explained and work to date along with 'issue identification' was discussed, also at the first Forum a chairperson was nominated and the constitution agreed<sup>7</sup>.
- The Elected Members were invited to a further two forums during the development process to provide feedback on the issues table, technical reports and policies proposed, any additional comments that the Elected Members had were reported back to the consultant (Halcrow)<sup>7</sup>.
- The Elected Members provided feedback to the authorities they were representing on the developments made in reviewing the SMP and fed back any issues arising from that back to the consultant (Halcrow).

---

<sup>7</sup>The shoreline has been divided into major sediment cells and the identification of the boundaries of these major sediment cells has been based on natural coastal process behaviour. There are 11 major sediment cells around the coast of Wales and England and these have been sub-divided for the purpose of coastal defence management into Sediment Sub-Cells. Sediment sub-cells are discrete lengths of shoreline bounded by either headlands or estuaries and define the limits of each Shoreline Management Plan.

<sup>8</sup> Refer to Appendix B for further details.

## (b) Key Stakeholder Forum (KSF)

Representatives were invited from a range of local, regional and national interest groups<sup>9</sup>. They were invited because the aim of the SMP was to ascertain a 'holistic' consultation approach. Primarily representatives included:

- conservation bodies (e.g. Kent Wildlife Trust),
- residential interest groups (i.e. local planners and Fairlight Cove Preservation Trust),
- business and commercial assemblages (i.e. Country Land and Business Association, Kent and East Sussex Fisheries),
- communication and infrastructure parties i.e. Network Rail, Dover Harbour and
- those with cultural and historic interests e.g. English Heritage<sup>10</sup>.

The original SMP gave a good indication of who the main key stakeholders were likely to be and these were added to a database of names, organisations, positions and contact details.<sup>11</sup>

For the key stakeholders the following approach was adopted:

- Approximately 170 questionnaires were issued to the stakeholders.<sup>9</sup>
- Requesting a contact name and address, data and information relevant to the study area and comments from the individual / organisation.
- Key Stakeholders were differentiated from stakeholders i.e. key stakeholders are generally local or regional representatives from organisations with a higher level of interest in the shoreline at the study.<sup>9</sup>
- From the 170 questionnaires sent out approximately 50 were returned and these responses were entered into a database.
- Any information and data relevant to the study area, provided by the key stakeholders was catalogued and recorded, this included maps, information booklets etc.
- Key Stakeholders were invited to three Key Stakeholders Forums: 11<sup>th</sup> September 2003, 13<sup>th</sup> November 2003 and 22<sup>nd</sup> March 2004. At each of these forums the SMP process was explained along with work to date.<sup>9</sup>

### A4.3 DATA COLLECTION

Data was collected via a number of sources including stakeholders, literature searches and web-searches. Key resources were:

Data from existing SMPs:

---

<sup>9</sup> Note: Parish councils and all but one resident association (Fairlight Residents Association being the exception) were not invited to take part in the key stakeholder process as it was the role of the Elected Members to represent these bodies and their interests.

<sup>10</sup> Refer to [Appendix B](#) for further details.

<sup>11</sup> Refer to [Appendix B](#)

- Coastal process data
- Characterisation information

Base data:

- OS data
- Geodata
- IFM Flood data
- ABMS data

Defence data:

- Coastal Protection Survey
- Property database

Thematic data:

- MAGIC downloads<sup>12</sup>
- English Nature
- English Heritage
- Nature Conservation Designation information
- Futurecoast (shoreline features and dynamics)
- Futurecoast cliff retreat rate data
- Futurecoast aerial CD
- Site visit

Local and regionally specific data:

- Strategy Studies (Cooden to Cliff End, Redoubt to Cooden, Cuckmere to Redoubt, Folkestone to Rye, Cliff End to Scots Float Sluice Strategy)
- Beachy Head to Rye Harbour Coastal Processes and Resource Study
- Dungeness South foreland Sea Defence Scheme (superseded by the Review of the Folkestone to Rye Strategy)
- Dungeness CHaMP
- Stakeholder questionnaires and supporting information<sup>13</sup>
- Fairlight Rock Bund Assessment (Technical Report)
- PPG25
- Local Plans

---

<sup>12</sup> MAGIC is the first web-based interactive map to bring together information on key environmental schemes and designations in one place. MAGIC is a partnership project involving seven government organisations who have responsibilities for rural policy-making and management, and although it has been designed to meet the needs of the partner organisations, the facility is available to anyone over the Internet. (The MAGIC partners are: Defra (Department for Environment, Food and Rural Affairs), Countryside Agency, English Heritage, English Nature, Environment Agency, Forestry Commission, ODPM (Office of the Deputy Prime Minister)).

<sup>13</sup> Refer to Appendix B

All the data and information gathered and used within the SMP development is referenced and recorded in [Appendix I](#). Some of the data collected was reviewed as part of separate tasks, such as that completed for the baseline understanding of Shoreline Interactions and Response (see below).

Consultation Draft

## A5 Stage 2: Assessments to Support Policy Development

### A5.1 BASELINE UNDERSTANDING OF COASTAL BEHAVIOUR AND DYNAMICS

#### (a) *Assessment of coastal processes and evolution*

A desk top baseline review of coastal processes was produced using existing data and geomorphological concepts.<sup>14</sup> The baseline review includes statements on sediment budget and hydrodynamic interactions, shoreline movement and predictions of shoreline evolution at various scales; SMP scale, regional scale (e.g. Beachy Head to Cliff End) and local scale (e.g. Beachy Head to Eastbourne). It underpins coastal process understanding of the study area and is the basis for the development of the baseline scenarios.<sup>15</sup>

The draft baseline report was issued to the stakeholders for review prior to it being finalised.

#### (b) *Assessment of coastal defences*

Data collated from the Coastal Protection Survey was validated using the Futurecoast aerial CDs, and the defence history, present defences and residual life plus natural features were documented<sup>16</sup>. This information was also ground-truthed by representatives on the CSG.

The draft report was reviewed by the CSG members.

### A5.2 BASELINE SCENARIOS

To assist in the development of future policy, future coastal response<sup>17</sup> was assessed, assuming two simple scenarios for the whole of the coastline, termed 'baseline scenarios': 'No Active Intervention' (NAI), assumes that existing defences are no longer maintained and will fail over time (their residual life) or undefended frontages will be allowed to evolve naturally and 'With Present Management' (WPM), assumes that all defences are maintained to provide a similar level of protection and defence to that currently provided. These assessments provide an understanding of the influence of defences on coastal behaviour and evolution.

- Both assessments built upon the coastal process and evolution baseline report together with the baseline assessment of coastal defences.<sup>18</sup>
- The key reference documents used were Futurecoast, current strategy studies, coastal protection survey and the existing SMP.

---

<sup>14</sup> Refer to Appendix C

<sup>15</sup> Baseline scenarios are 'hypothetical' case studies of how the coast is likely to act given the 'baseline' conditions i.e. no defences, defence failure, maintaining and sustaining the defences and beach management practise, introducing defences and beach management practises.

<sup>16</sup> Refer to Appendix C

<sup>17</sup> In this instance future coastal response is a theoretical concept of however the coastline will react to the proposed management option selected, detailing the possible effects on the position of the shoreline and the form of the back and foreshore.

<sup>18</sup> Refer to Appendix C

- The study frontage was divided into a number of discrete spatial (according to coastal processes and management) and temporal (0-20 years, 20-50 years and 50-100 year) units. Despite coastal processes being predominantly west to east, the baseline scenarios are presented east to west; to adhere to Defra guidelines, for national consistency.
- The outputs give an indication to shoreline position spatially and temporally and have been used to review the outcome of the various assets / issues.
- Summary statements were produced for both the 'No Active Intervention' and 'With Current management' scenarios, outlining the main repercussions for each scenario for each of the three epochs (0-20 years, 20 – 50 years and 50 – 100 years).<sup>15</sup>
- Key Stakeholders, Elected Members and the CSG reviewed the two assessments.
- A series of maps were produced to supplement the two scenarios, of 'No Active Intervention' and 'With Present Management' to provide a visual indication of how the shoreline is likely to change.<sup>19</sup>
- The mapped shoreline positions show the estimated maximum extent of change and are a combination of scientific evidence and geomorphological interpretation. The mapping also shows the Indicative Flood lines, as denoted by the Environment Agency, basically the main areas at risk from coastal flooding and erosion.<sup>20</sup>

### **A5.3 DEFINITION OF FEATURES, BENEFITS AND ISSUES**

#### **(a) Theme Review**

A central element of the identification and assessment of objectives<sup>21</sup> is the theme review. This has identified key features along the coast and why these features are important to stakeholders, i.e. the benefits that the feature provides in terms of nature conservation, landscape and character, human environment, including current and future land-use, and heritage. Information from the theme review, along with the other technical reviews, has been used as a basis for developing policy options and assessing the implications and thus suitability of these options.

Existing and newly procured data, from stakeholders, was collated. The data has been mapped e.g. boundaries of environmental designations, locations of heritage features.

The full report, and supporting maps, is included in [Appendix D](#) and includes information on the following themes:

- landscape and nature conservation
- historic environment
- current and future land use.

This information has been taken forward and incorporated in the Issues Table.

<sup>19</sup> Refer to Appendix C

<sup>20</sup> 'Flood Zones' was released (by the EA) towards the Final Stages of the SMP Review and for purposes of presentation the Indicative Flood Maps (IFM) have been retained. (Changes made were minimal and therefore does not affect Policy Development).

<sup>21</sup> Objectives detail the purpose of preventing a feature and its associated issue from coastal flooding and / or eroding.

**(b) Issues Table<sup>22</sup>**

A Table identifying features and benefits was developed, which clearly sets out for each location:

- the feature
- issues associated with the feature
- why the feature is important i.e. the benefit/s provided
- who the beneficiaries are
- whether it affects policy

The Issues Table was issued to the Key Stakeholders, Elected Members and CSG for review. Comments received from this were addressed in the *Issues Table* and amended where necessary.

**A5.4 DEFINITION OF OBJECTIVES**

The next stage was to use the features, issues and benefits identified to define objectives. These objectives fulfil two roles; firstly, they help inform the development of policy options, secondly, they help provide a focus for consensus amongst the SMP stakeholders on the various issues, sometimes conflicting, that are raised during the process of plan formulation.

Significant effort was undertaken in defining a feasible approach to determine the objectives; this included additional consultation with English Nature, English Heritage, the Environment Agency as well as planning officers from local authorities. Additional meetings were held with the aforementioned bodies for a number of reasons: 1) to reduce potential conflicts of interest and agree a solution, 2) the original SMP had been criticised for not achieving complete 'buy in', resulting in the document not being used to its full potential and 3) to try and bridge the gap between the approach adopted by planning and that of coastal management.

**A5.5 IDENTIFICATION OF FLOOD AND EROSION RISKS**

The mapping of the predicted shoreline change for *no active intervention* along with the Environment Agency's IFM data (Appendix F & H), was used as a baseline against which features at risk, from coastal flooding and erosion, were identified. This approach highlighted what features were potentially at risk in 0-20years, 20-50 years and 50-100 years.

**A5.6 ASSESSMENT OF OBJECTIVES**

To prioritise, or rank, the objectives generated, five fundamental questions were addressed:

- *At what spatial scales is the benefit important?* This ranges from local scale, for example it provides local access to car parks, to international scale, and e.g. where an area is designated as an area of environmental interest.
- *In what timescale is the benefit important?* As the policy of the SMP may change over time, i.e. hold the line to managed realignment' whether the feature or benefit has a finite importance needs to be considered.
- *Can the benefit be substituted?* Can the benefit be replaced at the appropriate scale? This is quite an important question as it raises the issue of mitigation and one has to consider not

---

<sup>22</sup> Refer to [Appendix E for a more detailed explanation](#).

only the spatial scale involved for replication but also how long will it take? Some geological assets, for example, cannot be substituted, as the environment they were created under was in the historic past and therefore unique.

- *Is there enough of the benefit?* Scarcity of the benefit at the scale at which it is important.
- *Importance of the benefit at the SMP scale or greater?* If the feature were lost tomorrow, what would the impact be on the beneficiaries?

The Theme Review assisted in answering the four questions, as did engaging with the stakeholders and CSG members. Using the answers to the above four questions, the objectives were then ranked. Through its role as a Pilot SMP testing the 2004 Draft Procedural Guidance the CSG recognised that it is neither possible nor appropriate to compare different types of features, e.g. environment site with housing, therefore a *comparative* ranking was generated specific to each 'theme', i.e. commercial, infrastructure, residential, landscape and heritage, segregating them in this manner meant that the objective could be more readily ranked.

Ranking was initially reviewed by the stakeholders and the CSG before being discussed in greater detail at the second stakeholder forum.<sup>23</sup>

---

<sup>23</sup> Refer to Appendix B regarding consultation and Appendix E for the Issues Table

## A6 Stage 3: Policy Development

### A6.1 DEFINITION OF POLICY SCENARIOS

#### (a) *Identification of key policy drivers*

From the onset of the South Foreland to Beachy Head SMP review it was apparent that along this section of the coast there are key policy drivers<sup>24</sup> i.e. Dungeness Nuclear Power Station, infrastructure of international importance i.e. Samphire Hoe and Dover Harbour, military training grounds of national importance (Lydd Cinque Port Training Corp), large conurbations like Eastbourne, Folkestone and Hastings and sites of national and international environmental importance e.g. Hooe and Pevensy Levels, Combe Haven and Pett Levels.

The proposed key policy drivers were discussed and verified with the stakeholders and Elected Members.

#### (b) *Identification of potential policy options*

The ranking of objectives and identifying their relative importance at each location enabled 1) key policy drivers (Filter 1) and 2) other objectives (Filter 2) to be identified<sup>25</sup>. For frontages where the objectives of a particular feature i.e. a key policy driver, point towards a single appropriate management policy then the term 'Filter 1 frontage' was applied. For those frontages where no key policy driver is present and several policies are applicable then the term 'Filter 2 frontage' was applied. At these locations any one of the generic policy options could potentially be appropriate, suitability was therefore reviewed by not only the objectives but by technical feasibility and economic justification. The broad-scale potential benefits and opportunities arising from each of the proposed policies were identified for each of the three epochs, at each of the Filter 2 frontages'. Policy scenarios were drafted for each of the proposed policies, at each of the policy frontages, for the three epochs and reviewed by the CSG, Elected Members and Key Stakeholders.

This initial screening process resulted in the identification of a single appropriate policy to be considered further for many frontages, where the other three policies clearly offered no benefits in terms of achievement of the defined objectives. For specific frontages, primarily where there were conflicts of interest, additional scenarios were developed to meet the stakeholders' aspirations. In developing these scenarios the understanding of the implications was maximised. This greater understanding was then in turn fed back to the steering group, elected members and key stakeholders.

It should also be noted that to fully contemplate and appreciate the potential implications of the proposed policy option of 'managed realignment' for certain frontages, additional meetings were held with planners from local authorities, representatives from English Nature and the Environment

---

<sup>24</sup> A key policy driver is: a feature that has sufficient importance in terms of the benefits it provides that it potentially has an overriding influence upon policy selection at the wider SMP scale

<sup>25</sup> Refer to Appendix F for further information

Agency, as issues like future housing needs and biodiversity action plan targets needed to be incorporated into scenario development.

DEVELOP THE 2 PARAGRAPHS ABOVE FURTHER?

## **A6.2 POLICY SCENARIO ASSESSMENT**

Having defined scenarios of possible appropriate policies for future shoreline management it was then necessary to appraise how the coast would evolve under these policy combinations and the implications of this for the important features along the shoreline. This process had two main stages of assessment as follows.

### **(a) Assessment of shoreline interactions and response**

Drawing on the baseline review and the two baseline scenarios of '*no active intervention*' and '*with present management*' a series of statements were produced that documented shoreline interaction and response for the proposed policies, in each of the three epochs. Thus linkages between frontages, in essence the shoreline interactions, were considered both spatially and temporally<sup>26</sup>. Predicted sea level rise (4 to 6mm per annum: current Defra recommended values) and potential climate change were built into the shoreline assessments.

Where it was likely that the character of the frontage would change quite dramatically (e.g. a beach is likely to disappear) then it was stipulated, as the impact of this is likely to affect the features / issues / benefits and objectives in the future and thus the long term engineering approach implemented.

### **(b) Assessment of achievement of objectives**

The Issues Table was used to assess which of the proposed policies fulfilled the objectives. This approach was extremely thorough as it allowed the objectives to be assessed per issue, per location, per policy. In adopting this methodology it was possible to identify which policy did or did not achieve the objectives. The policy that fulfilled the most individual and generic objectives (technical, economic and environmental) was then taken forward as the '*recommended policy*'<sup>22</sup>.

Only in extreme circumstances (i.e. over riding public interest) was another policy selected / promoted alongside the recommended policy. Preferred Scenario Identification

Following on from shoreline response and objective assessment, preferred policies per policy unit were determined. This was achieved by identifying which proposed policy fulfilled the technical, environmental and economical specifications best. The issues table proved to be a valuable tool as it is both site and policy specific.

For units that contain key policy drivers i.e. Dungeness and Dungeness Nuclear Power Station, only one preferred policy scenario i.e. '*hold the line*' was considered worthy of policy testing, whereas for other frontages i.e. Winchelsea, a number of policy scenarios per epoch were possible and therefore reviewed.

---

<sup>26</sup> Refer to Appendix G

At the Elected Member and Key Stakeholders Forums and progress meetings the stakeholders and CSG considered the draft policies proposed. For frontages where a conflict of interest was identified, further discussion and review was required. At specific locations the preliminary boundary limits were also questioned and again this was then subject to further evaluation<sup>27</sup> (see [Appendix E](#)).

Following on from the re-examination, the preferred policy was defined (on the basis that it achieved the maximum number of specific and generic objectives) and was forwarded to the CSG and Elected Members for review.

### **A6.3 PREFERRED SCENARIO IDENTIFICATION**

After defining the preferred policies (on technical, environmental and economical grounds) the proposals were emailed out to the Key Stakeholders, Elected Members and CSG (March 2004) for review<sup>28</sup>. The proposed policies were accompanied with an up to date version of the issues table and an economic analysis (damages and costs of implementing the preferred policy) both these documents support the policy summary selection. Areas of conflict previously identified were discussed in greater detail at both of the forums, so that the stakeholders understood, at least, the justification for the policy being proposed.

Comments and concerns from the key stakeholder and elected member forums were taken forward to the CSG and discussed further, so that the group were aware of any apprehensions the stakeholders had prior to agreeing what the preferred policies were likely to be.

Once the preferred scenario/policies had been defined, Policy Units were identified for delivery of the SMP. These are simply frontages for which a discrete shoreline management policy applies. These are divided to reflect changes in policy over time, and significant differences in policy implications. The rationale for the Policy Unit breakdown is presented in **Chapter 5** of the main document.

### **A6.4 CONFIRM PREFERRED SCENARIO**

Once the preferred policy had been agreed by the CSG, economic analysis was carried out to confirm the viability of the preferred policies, and alternative approach costs/benefits were considered as a sensitivity test.

Costs for all options considered have been developed: these are based on existing strategies and schemes appraisals where appropriate, and national studies elsewhere. Damages for all options have been calculated using the Modelling and Decision Support Framework (MDSF) tool (which consists of a customised GIS (ESRI ArcView) and a data management toolkit)<sup>29</sup>. The damages relate only to commercial and residential properties, and agricultural land loss. Average property costs together with the number of homes at risk under the preferred policy have been calculated, for each of the 3 epochs, using current and present values.

---

<sup>27</sup> Refer to Appendices E, F and G to see the progression.

<sup>28</sup> Appendix F

<sup>29</sup> Refer to Appendix H for further details (includes information on the analysis undertaken)

Economic assessment of implementing the preferred policy i.e. the cost of holding the line 'with present management', or choosing 'realignment' have all been offset against 'no active intervention' costs.

#### **A6.5 DRAFT SMP DOCUMENT PREPARATION**

A draft version of the main SMP has been produced to clearly present the Preferred Plan and the associated policies for review and consultation. This includes:

- Details on the objectives of an SMP and its status
- A non-technical explanation, which gives background to development of the plan and discusses concepts of sustainability
- An overview of the preferred plan and its implications for the SMP as a whole
- Statements for each policy unit outlining:
  - Details of the policies and their implementation
  - Justification for the policies
  - Implications for local objectives
- Mapping to support the statements

Consultation Draft

## A7 Stage 4: Public Examination

### A7.1 GAIN APPROVAL IN PRINCIPAL

Prior to a final version of the SMP document being produced, the Preferred Plan was presented to the Elected Member Forum (April 2004). The proposed policies together with policy justification were presented to the group for review and discussion. The EMF agreed to the policies presented to them and their comments are recorded in the minutes of the Forum.<sup>30</sup>

### A7.2 CONFIRM CONSULTATION STRATEGY

A strategy for the public consultation exercise was discussed with the Client Steering Group, the Elected Member Forum and Key Stakeholders. It was agreed that the most effective approach would be to have copies of the SMP Review Consultation Document on deposit in Local Authority offices and public buildings such as libraries, with the appropriate contact details available should the public require further information (this would include officers from local authorities, the Environment Agency and English Nature).

The full SMP documentation will also be available for review and to download at [www.se-coastalgroup.org.uk](http://www.se-coastalgroup.org.uk).

In addition a leaflet summarising the SMP process and proposed policies is produced and issued to all identified consultees, in addition to copies being available in public building e.g. libraries.

**The consultation period will run from 10<sup>th</sup> January 2005 to the 8<sup>th</sup> April 2005.**

---

<sup>30</sup> Refer to Appendix B

## **A8 Stages 5 & 6: Finalise Plan & Plan Dissemination**

Following the close of the consultation period (April 8<sup>th</sup> 2005) the Client Steering Group (CSG) will review all feedback and appraise the need to make any amendments to the SMP documentation and/or recommended policies. A Consultation Report will then be produced summarising feedback and how these issues have been dealt with.

The proposed Final SMP policies will then be presented to the Elected Members (at a forthcoming Forum, date yet to be determined) for review, ahead of final document preparation.

Once the final documents have been produced each authority / organisation<sup>31</sup> will be responsible for its adoption.

Following adoption, Stage 6 will then involve publicising the final plan and its recommendations, and implementation of the policies by the appropriate authorities.

---

<sup>31</sup> Refer to Section A2.2